



**George Giles**  
 1100 State Street  
 Erie, PA 16501  
 Phone: (814) 871-8215 ext. 4215  
 Email: gilesg@natfuel.com  
 Website: www.nationalfuel.com/gathering/

## ABOUT NATIONAL FUEL GAS MIDSTREAM COMPANY, LLC

National Fuel Gas Midstream Company, LLC, shares in more than 100 years of experience in gathering and processing natural gas. Our primary business is to build, own and operate natural gas processing and pipeline gathering facilities in the Appalachian region. We work with producers confidentially to develop a tailored project to collect locally produced gas at or near the wellhead, to create outlets, to maximize throughput, to reduce operating costs and to improve reliability while ensuring compliance and safety—all designed to improve their bottom lines.

## NATURAL GAS SAFETY

Natural gas is one of the safest and cleanest burning energy sources available. National Fuel Gas Midstream Company, LLC makes safety a top priority in all that we do from design to construction to operations.

National Fuel Gas Midstream Company, LLC's 24-hour gas emergency line, **1-800-526-2608**.

## WHAT DOES NATIONAL FUEL GAS MIDSTREAM DO IF A LEAK OCCURS?

To prepare for the event of a leak, National Fuel Gas Midstream regularly communicates, plans and trains with local emergency responders. Upon the notification of an incident or leak the pipeline company will immediately dispatch trained personnel to assist emergency responders.

National Fuel Gas Midstream and emergency responders are trained to protect life, property and facilities in the case of an emergency.

National Fuel Gas Midstream will also take steps to minimize the amount of product that leaks out and to isolate the pipeline emergency.

## MAINTAINING SAFETY AND INTEGRITY OF PIPELINES

National Fuel Gas Midstream invests significant time and capital maintaining the quality and integrity of their pipeline systems.

Most active pipelines are monitored 24 hours a day via manned control centers. National Fuel Gas Midstream also utilizes aerial surveillance and/or on-ground observers to identify potential dangers. Control center personnel continually monitor the pipeline system and assess changes in pressure and flow. They notify field personnel if there is a possibility of a leak. Automatic shut-off valves are sometimes utilized to isolate a leak.

Gas transmission and hazardous liquid pipeline operators have developed supplemental hazard and assessment programs known as Integrity Management Programs (IMPs). Specific information about National Fuel Gas Midstream's program may be found on our Web site, or by contacting us directly.



**Know what's below.  
Call before you dig.**

## CALL 8-1-1 BEFORE YOU DIG

Before beginning a new project in your yard, call 8-1-1 to have your utility lines marked for free at least three business days before you get started. It's a quick, easy way to protect against unintentionally hitting underground utility lines. If you are planning on hiring a contractor to complete your project, then the call to 811 must be made by them. State code states that your contractor cannot dig on your property unless they have made their own utility locate request by calling 811 to have lines marked.

## EMERGENCY CONTACT:

**1-800-526-2608**

### PRODUCTS/ DOT GUIDEBOOK ID#/ GUIDE#:

Natural Gas	1971	115
-------------	------	-----

### PENNSYLVANIA COUNTIES OF OPERATION:

Cameron	McKean
Elk	Tioga
Lycoming	

*Changes may occur. Contact the operator to discuss their pipeline systems and areas of operation.*

In Pennsylvania, you must call 811 at least three days before digging.

After you call, we will send a professional to conduct a site survey and mark any gas lines owned by National Fuel which are on your property and that might conflict with the proposed project. Once marked, you will know the approximate location of National Fuel's underground gas lines.

Keep your family safe and call before:

- Planting trees or shrubs
- Installing a pool, patio or deck
- Creating new garden beds
- Installing a new fence
- Setting up a swing set

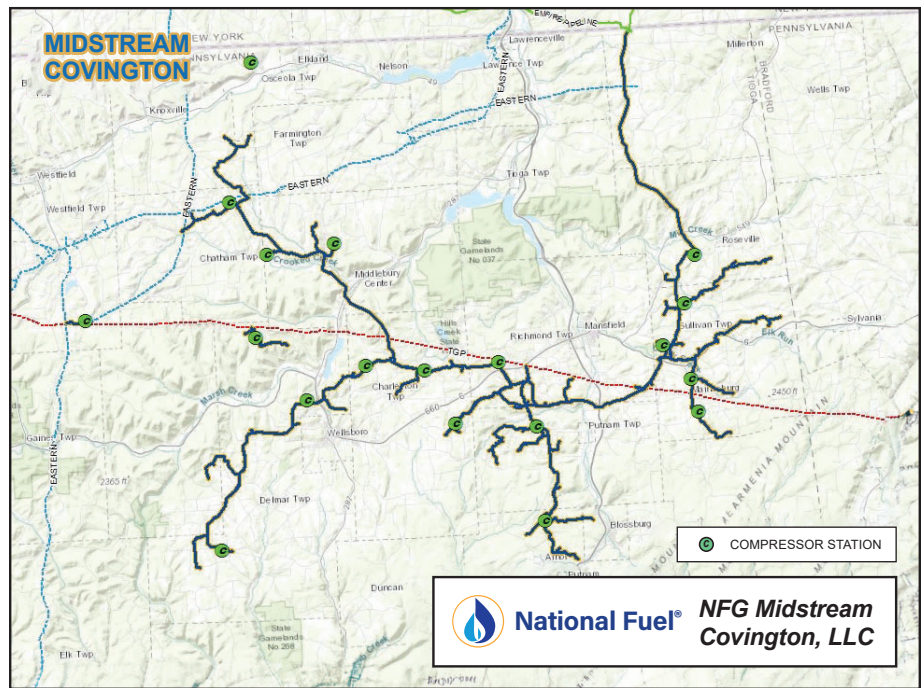




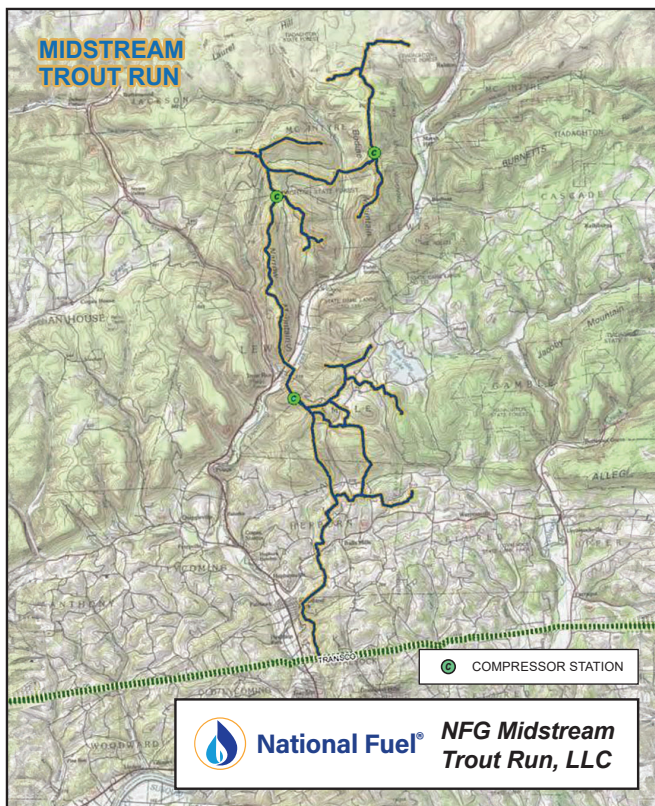
## ENCROACHMENT

National Fuel must have access to its gas lines, meters and other facilities for maintenance purposes. Projects that are too close to our facilities can restrict our ability to work on them. When this happens, it is known as an encroachment. In order to prevent an encroachment, in addition to calling 811 to have our lines marked before you dig, call National Fuel at 1-800-365-3234 to let us know about your project. We will send a representative to inspect your project and ensure we will have adequate access to our facilities after it is completed.

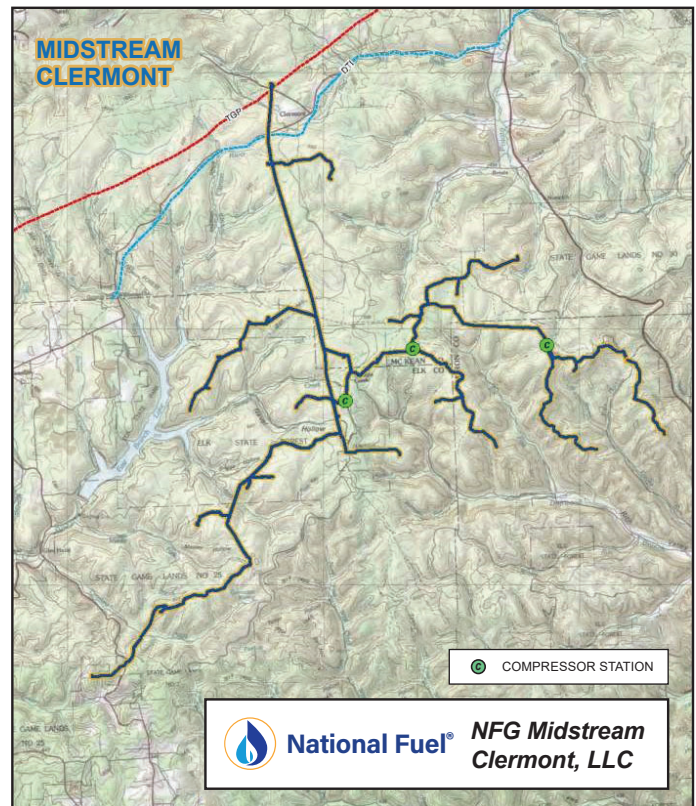
Learn more at [call811.com](http://call811.com).



The Tioga Gathering System, owned and operated by National Fuel Gas Midstream Covington, LLC, is located in Tioga County, Pennsylvania. Gas began flowing in November 2009 and has significantly expanded since then. It consists of in field gathering lines, trunklines, dehydration and compression facilities. It is currently capable of moving approximately 970 million cubic feet of natural gas per day with interconnects to Empire Pipeline, Inc., Eastern Gas Transmission and Storage, Inc., as well as Tennessee Gas Pipeline Company, L.L.C.



The Trout Run Gathering System is located in Lycoming County, Pennsylvania. This pipeline went into service in May 2012. The Trout Run Gathering System consists of more than 45 miles of 20-inch and smaller high-pressure gathering lines, compression, dehydration facilities and an interconnection with Transco. As built, this system is capable of moving up to approximately 585 million cubic feet per day.



The Clermont Gathering System currently extends through McKean, Elk and Cameron counties in Pennsylvania. The system delivers Marcellus and Utica production to Tennessee Gas Pipeline Company, L.L.C. and to National Fuel Gas Supply Corporation, with current capability to move approximately 750 million cubic feet of natural gas per day.